




ACT

Configuring an ASUS Router

Basic Configuration Steps

Configuring Your Router

STEP 1 (a): Connect Your PC to the Router

- Unbox the router and power up the router.
- Connect the Act internet cable to the WAN/Internet port(different coloured port) of the router.
- An extra cable will be available with the router, take LAN cable connect one end to the LAN port(1-4) of the router(any one port) and one end to the PC or Laptop.
- In the system press  key & R key together  +  to open Run dialog box.
- Type ipconfig on the command prompt(Black screen) . The default gateway of the LAN or Ethernet adapter will be the Router address. (Ex:192.168.1.1)

```
C:\Users\USER>ipconfig
Windows IP Configuration

Wireless LAN adapter Wireless Network Connection:

    Media State . . . . . : Media disconnected
    Connection-specific DNS Suffix . : ATRIA

Ethernet adapter Local Area Connection:

    Connection-specific DNS Suffix . :
    IPv4 Address. . . . . : 192.168.1.101
    Subnet Mask . . . . . : 255.255.255.0
    Default Gateway . . . . . : 192.168.1.1
```



STEP 1 (b): Connect Your Mobile

- Switch on the router and connect ACT internet cable to the WAN/Internet port of the router
- Go to setting in the Mobile, turn on Wi-Fi and wait until the mobile detects router name press the router name to connect.
- If the router is already configured and the Wi-Fi password is known then go to settings in the Mobile
- Under “Wireless and Networks”, press Wi-Fi make sure "Wi-Fi" is turned on.
- Wait until the mobile detects router name press the router name if prompted enter the Wi-Fi password and press Connect.

NOTE

- Every Router Configuration has two parts
 - Configuring the Internet Part, where we tell the Router how to connect to the internet.
 - Configuring the Wi-Fi Part, where we decide the name and password with which we connect to the Router
- Internet Configuration shown here will guide to Configure the Router in PPPoE.
 - This will enable you to browse internet directly, every time you connect to the router. No need to login again and again.
- Wi-Fi Configuration has also been given, in order to ease the process of you connecting to the Router
 - SSID and Password Creation have been explained

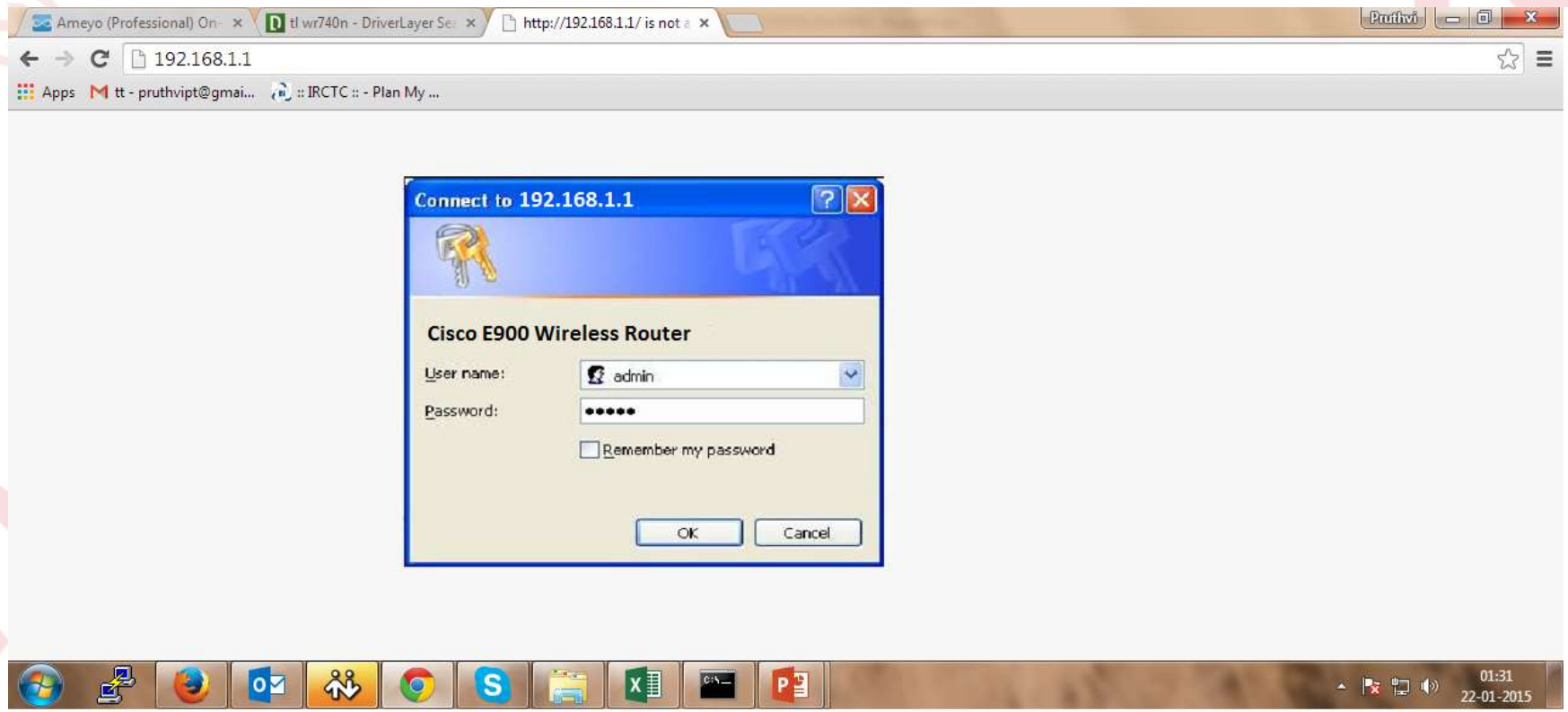
STEP 2: Logging into the Router

- When the gateway IP is entered in the browser, the login page appears. The usual usernames and passwords are,

Router Name	IP Address	Username	Password
Cisco or Linksys	192.168.1.1	admin	admin
D-Link	192.168.0.1	admin	(blank)
TP-Link	192.168.0.1	admin	admin
Netgear	192.168.1.1	admin	password
Belkin	192.168.2.1	Click on Login in Home	(blank)
Tenda	192.168.0.1	admin	admin
i-Ball Baton	192.168.1.1	admin	admin
Digisol	192.168.2.1	admin	1234 or admin
Asus	192.168.1.1	admin	admin

- If all the above credentials do not work, please check the back of the router where the username and password will be mentioned.

STEP 2: Example Webpage



STEP 3: Internet Setup – PPPoE Configuration

Internet Connection | QoS | Port Trigger | Virtual Server | DMZ | DDNS

WAN - Internet Connection

RT-N12 supports several connection types to WAN. These types are selected from the dropdown menu beside WAN Connection Type. The setting fields differ depending on the connection type you selected.

WAN Connection Type: **PPPoE** (2)

Choose IPTV STB Port: None

Enable UPnP?: Yes No

WAN IP Setting

Get the WAN IP automatically?: Yes No

IP Address: []

Subnet Mask: []

Default Gateway: []

WAN DNS Setting

Connect to DNS Server automatically?: Yes No

DNS Server1: []

DNS Server2: []

Account Setting

User Name: username

Password: [] (3)

Idle Disconnect Time in seconds: []

Disconnect after time of inactivity (in seconds): [] Tx Only

MTU: 1492

MRU: 1492

PORTAL PAGE USERNAME AND PASSWORD

4 SAVE THE CONFIGURATION

STEP 4: Wi-Fi Setting – Connecting to the Router

ACT

The screenshot shows the 'Wireless - General' configuration page of a router. The left sidebar has a 'Wireless' menu item circled in red with a red '1' next to it. The main content area has several fields: 'SSID' is circled in red with a red '2' next to it and contains 'Router Name'; 'WPA Pre-Shared Key' is circled in red and contains 'password'; and the 'Apply' button at the bottom right is circled in red with a red '4' next to it. Other fields include 'Hide SSID' (Yes/No), 'Wireless Mode' (Auto), 'Channel bandwidth' (20 MHz), 'Channel' (Auto), 'Authentication Method' (WPA2-Personal), 'WPA Encryption' (AES), 'WEP Encryption' (None), 'Key Index' (2), 'WEP Key 1-4', 'ASUS Passphrase', and 'Network Key Rotation Interval' (0).

SSID- Wireless Name, Customer choice

A large, light gray circular arrow pointing to the left, partially visible on the left edge of the slide.

STEP 5: Checking Status



- Click on Network map, and click on Globe symbol and look for status to be ‘Connected’.
- If status is not ‘Connected’, click on Connect and look for IP address under WAN IP.
- If an IP address is acquired then Internet is connected.



Changes to be Made After Configuration

- If the Wi-Fi password is changed, we need to update the password in all the devices to get connected to the Internet.
- Changes in PC
 - **Windows 7:** Click on Windows button → click on Control Panel → click on Network and Internet → click on Network and Sharing Centre.
 - In the Tasks pane(Left side of screen), click Manage wireless networks
 - Right-click the router name → click Remove network → click on OK.
 - Click on Network icon(right bottom corner next to system Time), click on Router name and enter the new Wi-Fi password and Connect.

- Changes in PC

- **Win 8,8.1:** Click on Network icon(right bottom corner next to system Time), Right click on Router name click on “Forget this network”. Again click on Router name, enter the new Wi-Fi password and Connect.
- **Win 10:** Click on Network icon(right bottom corner next to system Time), click on Network settings under Wi-Fi click on Manage known Networks → Click on your Router name and Click on Forget, and again click on Network icon → click on Router name enter the new Wi-Fi password and Connect

- Mobile or Tablet

- Go to ‘Settings’ in Mobile, turn on Wi-Fi and long press on your Router name and press “Forget network”. Again press the router name. You will be prompted to enter the Wi-Fi password . Enter the Password and Connect.