




Configuring a Netgear Router

Basic Configuration Steps

Configuring Your Router

STEP 1 (a): Connect Your PC to the Router

- Unbox the router and power up the router.
- Connect the Act internet cable to the WAN/Internet port (different colored port) of the router.
- An extra cable will be available with the router, take LAN cable connect one end to the LANport(1-4) of the router(any one port) and one end to the PC or Laptop.
- In the system press  key & R key together  +  to open Run dialog box.
- Type ipconfig on the command prompt (Black screen). The default gateway of the LAN or Ethernet adapter will be the Router address. (Ex:192.168.1.1)

```
C:\Users\USER>ipconfig

Windows IP Configuration

Wireless LAN adapter Wireless Network Connection:

    Media State . . . . . : Media disconnected
    Connection-specific DNS Suffix . : ATRIA

Ethernet adapter Local Area Connection:

    Connection-specific DNS Suffix . :
    IPv4 Address. . . . . : 192.168.1.101
    Subnet Mask . . . . . : 255.255.255.0
    Default Gateway . . . . . : 192.168.1.1
```


STEP 1 (b): Connect Your Mobile

- Switch on the router and connect ACT internet cable to the WAN/Internet port of the router
- Go to setting in the Mobile, turn on Wi-Fi and wait until the mobile detects router name press the router name to connect.
- If the router is already configured and the Wi-Fi password is known then go to settings in the Mobile
- Under “Wireless and Networks”, press Wi-Fi make sure "Wi-Fi" is turned on.
- Wait until the mobile detects router name press the router name if prompted enter the Wi-Fi password and press Connect.

NOTE

- Every Router Configuration has two parts
 - Configuring the Internet Part, where we tell the Router how to connect to the internet.
 - Configuring the Wi-Fi Part, where we decide the name and password with which we connect to the Router
- Internet Configuration shown here will guide to configure the Router in PPPoE.
 - This will enable you to browse internet directly, every time you connect to the router. No need to login again and again.
- Wi-Fi Configuration has also been given, in order to ease the process of you connecting to the Router
 - SSID and Password Creation have been explained\
 - Few high end routers have two bands to work on – 2.4 GHz and 5 GHz
 - 2.4 GHz band provides higher range, but lesser speed.
 - 5 GHz band provides lower range, but higher speed

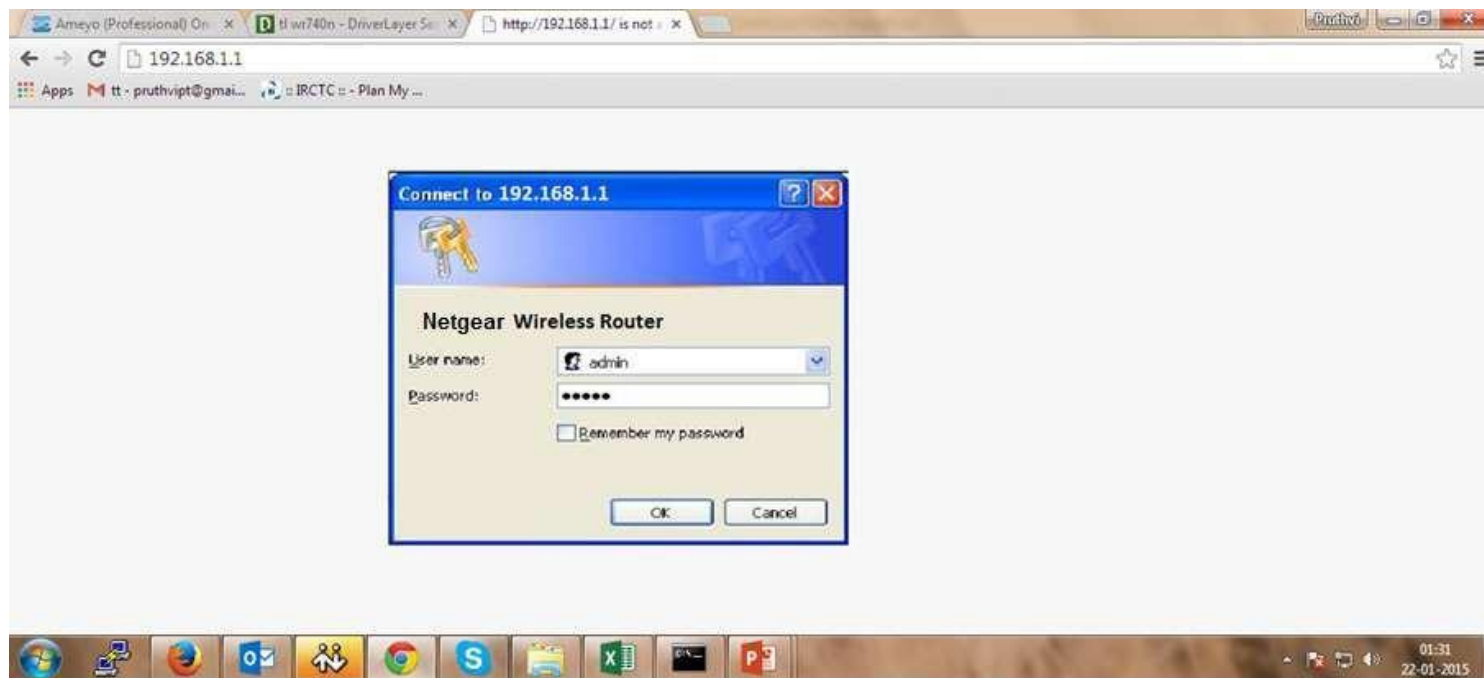
STEP 2: Logging into the Router

- Open a browser  Enter the below IP Address in the Address Bar. A login page appears. The usual usernames and passwords are given in the table below.

Router Name	IP Address	Username	Password
Cisco or Linksys	192.168.1.1	admin	admin
D-Link	192.168.0.1	admin	(blank)
TP-Link	192.168.0.1	admin	admin
Net gear	192.168.1.1	admin	password
Belkin	192.168.2.1	Click on Login in Home	(blank)
Tenda	192.168.0.1	admin	admin
I-Ball Baton	192.168.1.1	admin	admin
Digisol	192.168.2.1	admin	1234 or admin
Asus	192.168.1.1	admin	admin

- If all the above credentials do not work, please check the back of the router where the username and password will be mentioned.

STEP 2: Logging into the Router – Example Webpage



STEP 3: Internet Connectivity – PPPoE Configuration

Home Page on Logging In



STEP 3: Internet Connectivity – PPPoE Configuration

Basic Settings

Does Your Internet Connection Require A Login?

Yes

No

Internet Service Provider PPPoE

Login **Portal page**

Password **Username and password**

Service Name (If Required)

Idle Timeout (In Minutes) 5

Domain Name Server (DNS) Address

Get Automatically From ISP

Use These DNS Servers

Primary DNS [] . [] . [] . []

Secondary DNS [] . [] . [] . []

STEP 4: Wireless Setup – Router SSID/Password Configuration

BASIC **Advanced**

Home > **Wireless Settings** [Cancel] [Apply]

Internet >

Wireless >

Attached Devices >

Parental Controls >

ReadySHARE >

Guest Network >

Region Selection
Region: United States

Wireless Network (2.4GHz b/g/n)
Name (SSID): NETGEAR
Channel: Auto
Mode: Up to 300 Mbps

Internet Setup
 Enable SSID Broadcast
 Enable Wireless Isolation

Security Options
 None
 WPA2-PSK [AES]
 WPA-PSK [TKIP] + WPA2-PSK [AES]
 WPA/WPA2 Enterprise

Security Options (WPA2-PSK)
Passphrase: 12345678 (8-63 characters or 64 hex digits)



Help Center

HELP & SUPPORT Documentation | Support NETGEAR.com | Router FAQ SEARCH HELP

SSID- Wireless Name, Customer choice

Changes to be made after Configuration

- If the Wi-Fi password is changed, we need to update the password in all the devices to get connected to the Internet.
- Changes in PC
 - **Windows 7:** Click on Windows button → click on Control Panel → click on Network and Internet → click on Network and Sharing Centre.
 - In the Tasks pane(Left side of screen), click Manage wireless networks
 - Right-click the router name → click Remove network → click on OK.
 - Click on Network icon (right bottom corner next to system Time), click on Router name and enter the new Wi-Fi password and Connect.

- Changes in PC
 - **Win 8, 8.1:** Click on Network icon (right bottom corner next to system Time), Right click on Router name click on “Forget this network”. Again click on Router name, enter the new Wi-Fi password and Connect.
 - **Win 10:** Click on Network icon(right bottom corner next to system Time), click on Network settings under Wi-Fi click on Manage known Networks  Click on your Router name and Click on Forget, and again click on Network icon  click on Router name enter the new Wi-Fi password and Connect
- Mobile or Tablet
 - Go to ‘Settings’ in Mobile, turn on Wi-Fi and long press on your Router name and press “Forget network”. Again press the router name. You will be prompted to enter the Wi-Fi password. Enter the Password and Connect.